

# CELEB IKON 6

## Product Description

Celeb IKON 6 is a powerful IP65-rated softlight designed for use in any indoor or outdoor environment and incorporates our latest technical innovation: a new RGBwWcW LED engine capable of driving full power at all white and color points. Confidently move from warm to daylight tones and solve color rendering challenges with an LED system equipped with two new and improved full-spectrum white sources that deliver the broadest spectrum white light available on the market.

Managed by True Match® firmware, Celeb IKON 6 gives you access to the exact look you want to achieve on camera. Instantly dominate the close-ups with fantastic color temperature, camera lut and dimming options. Access full saturated colors with hue angle color adjustments and input RGB values.

True Match® makes on-board control quick and easy for board operators to remotely configure and operate Celeb IKON 6 via RDM and DMX. LumenRadio wireless DMX comes standard, with the option to choose Multiverse wireless DMX at the time of purchase or change any time through our service center.

## Key Features

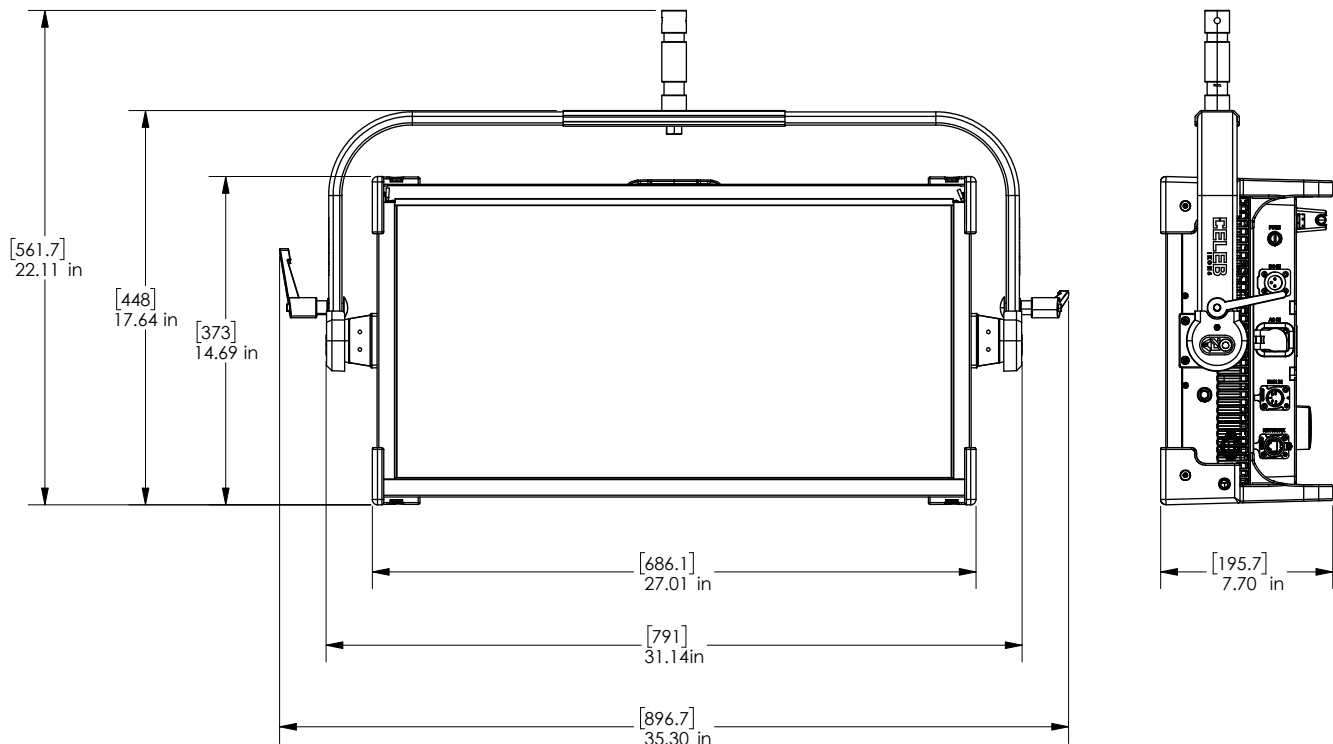
- RGBwWcW LED Engine with improved White Space and Color Space Spectrums
- 8 independently controlled zones
- Built in CRMX Control – Factory swappable to City Theatrical Multiverse
- Removable Diffusion
- Ethercon In/Out Ethernet ports
- 5 Pin XLR DMX In/Out ports
- Data Pass Thru on both DMX and Ethernet Lines
- RDM / sACN / ArtNet
- USB-C for storing / loading presets
- Firmware updates via USB-C
- DC battery input via 3 pin XLR
- Jr Pin mount and feet for staging, mounting, and hanging



# CELEB IKON 6

## Specifications

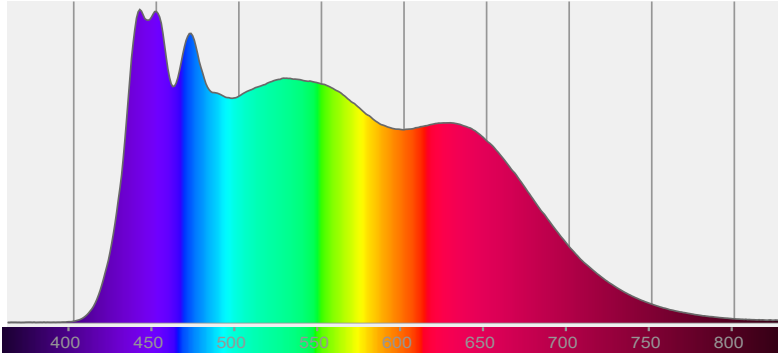
- 3000 Watt LED Engine powered to 600 watts of output at all White Points and Color Points
- IP65 Outdoor Rated
- CRI: 98.2
- CRI R9 Value: 98.0
- TLCI: 99
- TM-30 Rf: 95.7
- TM-30 Rg: 99.3
- Beam Angle: 112°
- Weight (with yoke, jr pin and diffusion): 40lbs / 18.1kg



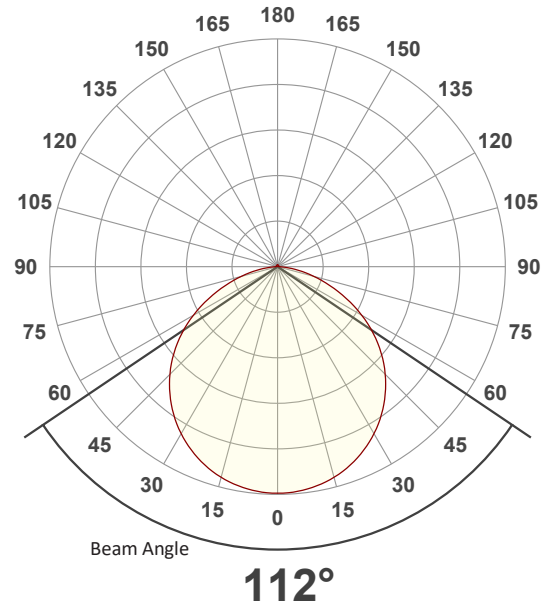
WEIGHT: 39.9 lbs

# CELEB IKON 6

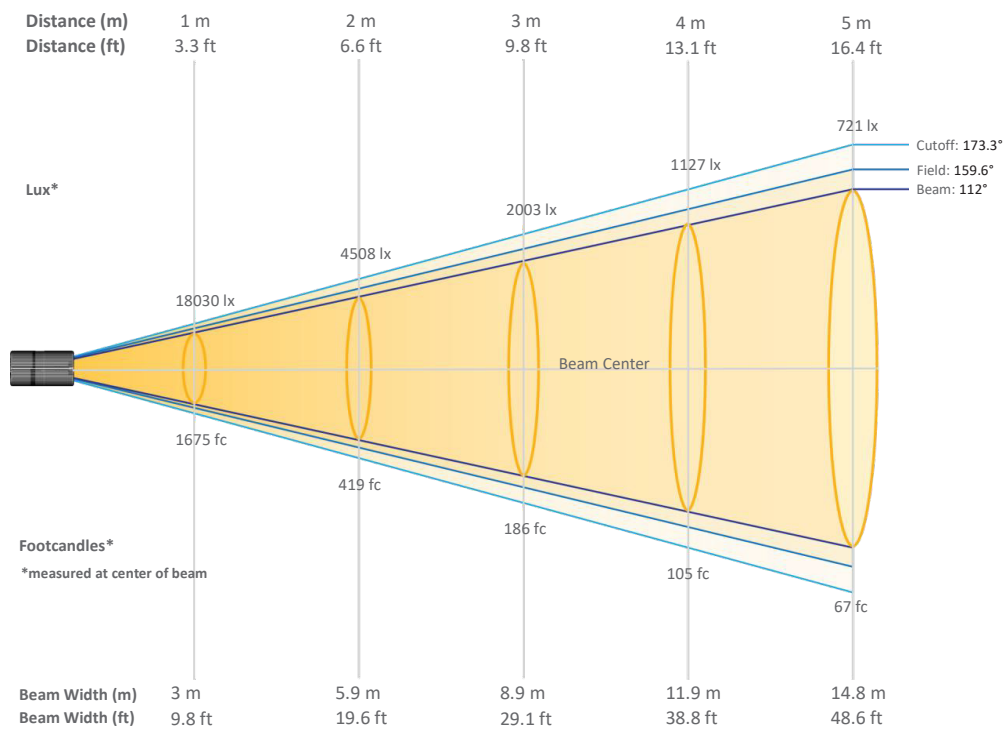
Spectral Distribution



Angular Beam Distribution



## Beam Details



Beam Intensities from 1-5m (3.3-16.5ft)

Distance	1m	2m	3m	4m	5m
Lux	18030	4508	2003	1127	721
Distance	3.3ft	6.6ft	9.8ft	13.1ft	16.4ft
FC	1675	419	186	105	67



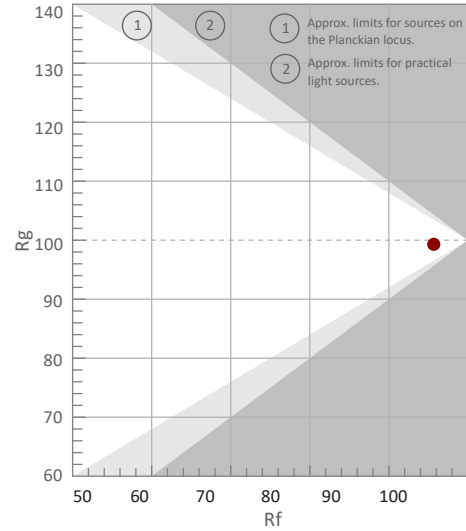
# CELEB IKON 6

## TM-30 Details

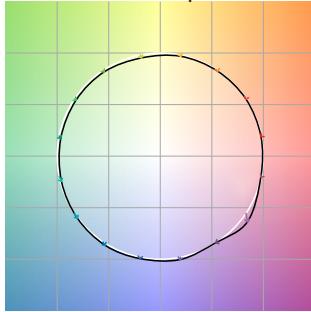
**Rf 95.7**  
Fidelity Index  
(Rg)

**Rg 99.3**  
Gammut Index (Rg)

Hue Bin	Rf	Graphic shifts (%)	
		Chroma	Hue
1	96	-1%	0%
2	99	0%	0%
3	98	-1%	-1%
4	97	-1%	-1%
5	95	-3%	-1%
6	97	-2%	0%
7	97	-2%	0%
8	95	-2%	2%
9	94	-1%	5%
10	92	0%	5%
11	93	2%	4%
12	98	1%	0%
13	96	2%	-1%
14	97	0%	-2%
15	91	6%	-6%
16	98	0%	-1%



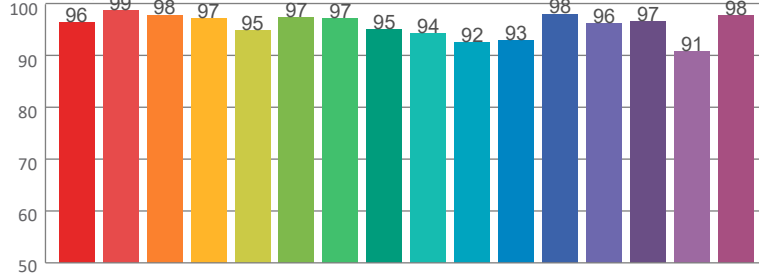
Color Vector Graphic



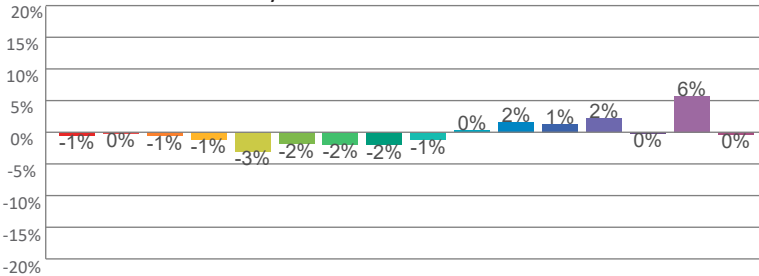
Color Distortion Graphic



Rf by Hue



Local Chroma Shift by Hue



Color Evaluation Sample

